

Test Case-13

Test Name: RJIL-IP-QA-DS-SYS-013

Test Objective: To check support of ICMPv6

Test Configuration:

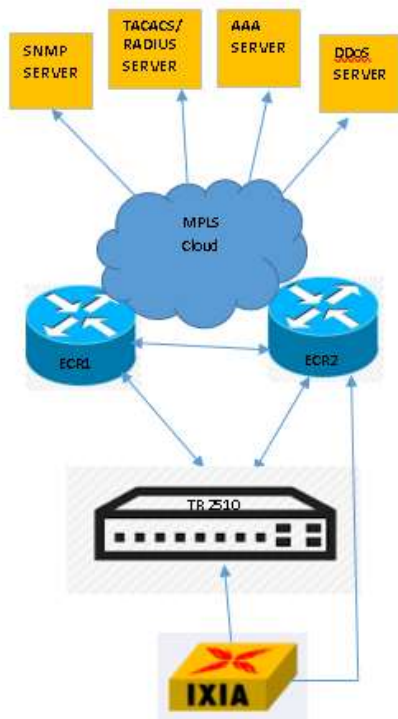
```
ipv6 default-gateway 2405:200:1410:1010::81
```

```
int vlan 883
```

```
ipv6 address 2405:200:1410:1010::84/125
```

```
!
```

Test Set up (Including Pre requisites): Switch , ECR1, ECR2, IXIA



Procedure: Connect switch to ECR1, ECR2 and IXIA

Action:		Response:	
1	1. ping6 2405:200:1410:1010::81 (default gateway) and bdi 883 IPv6 of ECR1 and ECR2.	1	Switch should be able to ping gateway, ECR1, and ECR2 by ICMPV6
Problem – Issues:			
Expected Result: Switch should be able to ping ECR1, and ECR2 for ICMPV6			
Actual Result: Current configuration: ! ip default-gateway 192.168.1.11 ipv6 default-gateway 2405:200:1410:1010::81 Switch# Switch#ping6 2405:200:1410:1010::81 PING 2405:200:1410:1010:: (2405:200:1410:1010::81): 56 data bytes !!!! --- 2405:200:1410:1010:: ping6 statistics --- 5 packets transmitted, 5 packets received, 0% packet loss round-trip min/avg/max = 0/8/40 ms			